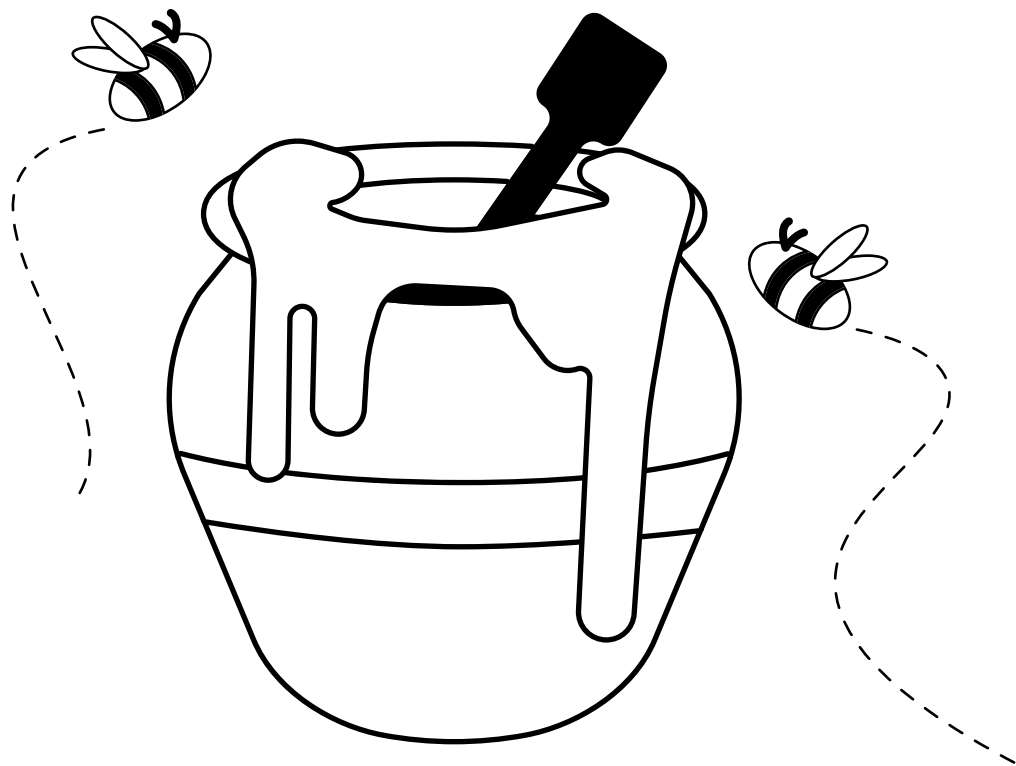


How many honeybees can you spot on the page?



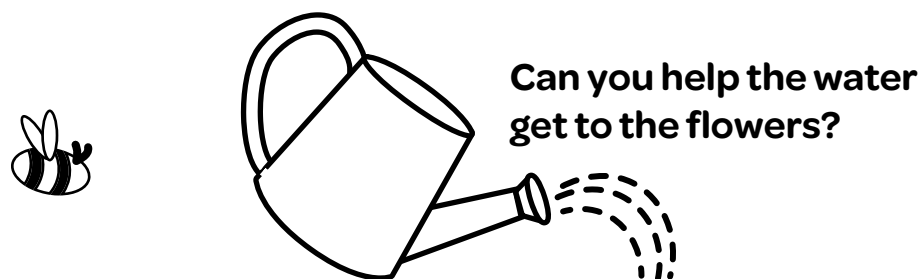
Farming in Chester County!



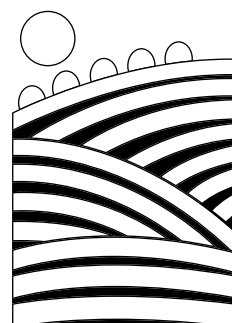
Did you know you can find award-winning cheese, Christmas trees, honey, alpaca fleece, mushrooms and everything in between growing on the over 1,500 farms in Chester County?



Three cheers for all the hard-working farmers who feed us every day!



Can you help the water get to the flowers?



**Chester
County
Ag Council**
chescofarming.org



Color in these vegetables!



Find these farm words!

- farmstand
- produce
- vegetable
- fruit
- chicken
- flowers
- cheese
- corn
- sheep
- apple
- barn
- cow

B	F	R	U	I	T	C	F	A	V
A	G	P	C	F	F	O	A	G	E
R	O	R	H	L	Q	W	R	S	G
N	Z	O	I	O	A	D	M	H	E
M	E	D	C	W	P	E	S	E	T
I	L	U	K	E	P	H	T	E	A
M	O	C	E	R	L	Z	A	P	B
V	K	E	N	S	E	J	N	Y	L
C	O	R	N	O	C	X	D	F	E
C	K	I	C	H	E	E	S	E	N

